

Smoke exhaust Ø300

Ø 150

Air inlet tube  
Ø150

Air inlet tube  
Ø150

Ø 300

Ø 150

Total width when air inlets (2x Ø150)  
are mounted on back

( 619 )

605

364

655

1310

414 (Door open)

152

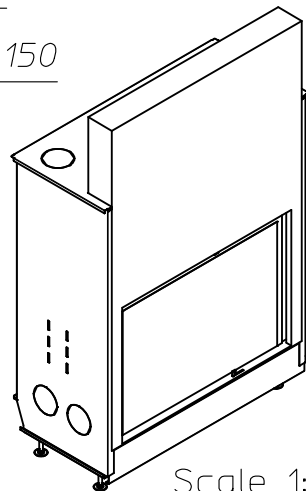
Ø 150

Ø 150

174

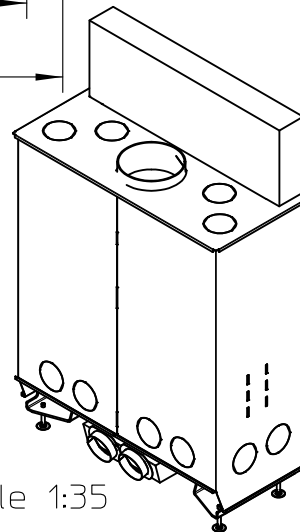
380

619



Scale 1:35

Scale 1:35



ULTIME D Patented

metalfire

## Technical Document

Model: ULTIME D MF 1050-75 WHE 1S

### Dimensions (mm)

- combustion opening WxH: 1086x756
- external WxDxH: 1310x619x2061
- fresh air: 2xØ150
- diameter flue: Ø300

### Technical Data

- capacity: 27kW
- efficiency capacity: 77.6%
- CO (volume with 13%O<sub>2</sub>): 0.1%
- dust (volume with 13%O<sub>2</sub>): 26mg/m<sup>3</sup>
- weight: 495kg
- Air intake to convection: minimum 720cm<sup>2</sup> (4xØ150)
- Air exhaust to convection: minimum 720cm<sup>2</sup> (4xØ150)

### Specifications

- inside finishing: heat-resistant black paint
- vermiculite insulation plates
- convection jacket in galvanized steel
- cast iron stoke grate
- back and sides: ribbed cast iron
- interior finishing: ORIGINAL (ribbed cast iron)

### Options

- Promat insulation kit
- Finishing frame

### Table: prescribed insulation thickness (mm)

Combustable finishing material					
	A	B	C	D	E
Test report (TC = 0,14 W/mK)	NC	NC	100	130	40
Metalfire recommended Promasil 1100L (TC = 0,081 W/mK)	NC	NC	60	75	25
Non-combustable finishing material					
non-combustable materials (structural building items EXCLUDED e.g. load bearing walls)	0	0	0	0	0
TC = thermal conductivity NC = non-combustable					

### First aid and technical support:

- support@metalfire.eu
- +32 (0)9 261 50 57

scale 1:25

www.metalfire.eu

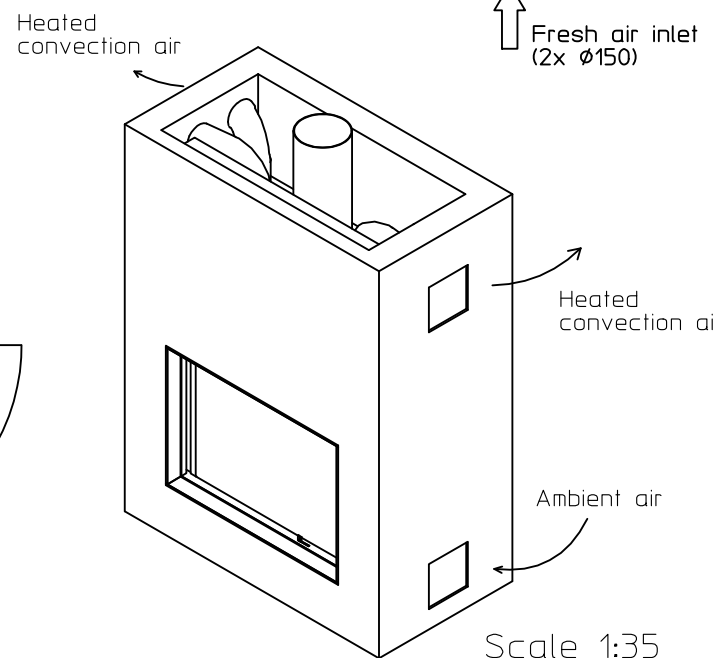
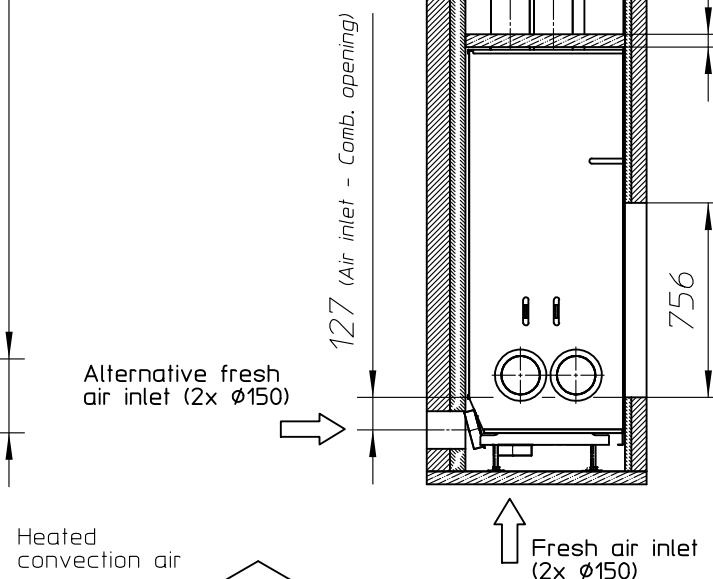
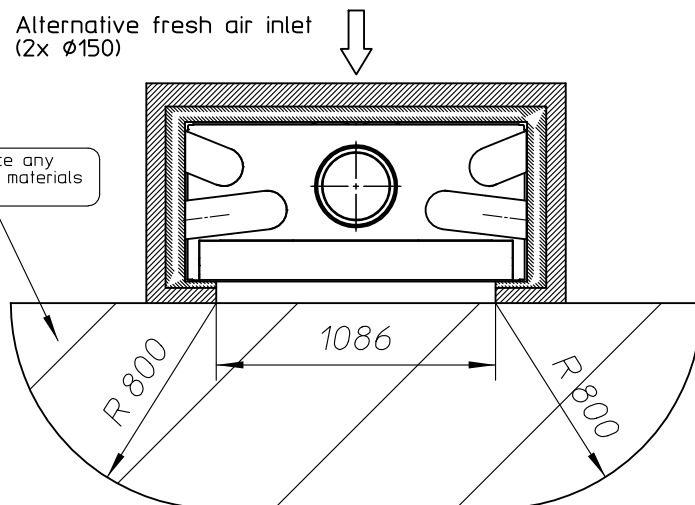
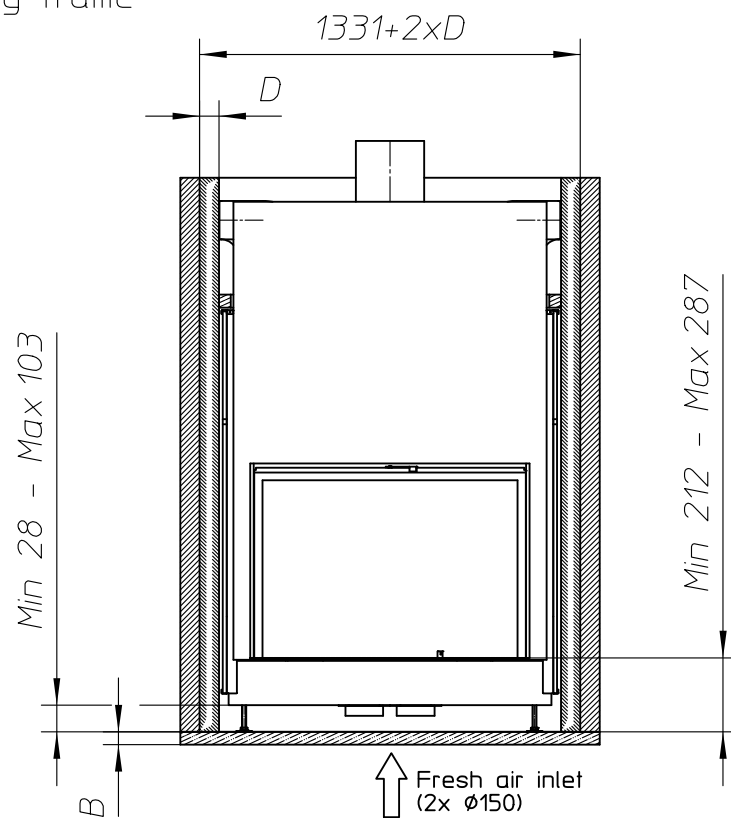
EN 13229

General dimensional tolerances up to 6mm  
Metalfire preserves the right to modify specifications without previous notice

Rev.  
A

CE  
Sheet  
1/5

Without finishing frame



# ULTIME D Patented

## metalfire

### Technical Document

Model: ULTIME D MF 1050-75 WHE 1S

#### Dimensions (mm)

- combustion opening WxH: 1086x756
- external WxDxH: 1310x619x2061
- fresh air: 2xØ150
- diameter flue: Ø300

#### Technical Data

- capacity: 27kW
- efficiency capacity: 77.6%
- CO (volume with 13%O<sub>2</sub>): 0.1%
- dust (volume with 13%O<sub>2</sub>): 26mg/m<sup>3</sup>
- weight: 495kg
- Air intake to convection: minimum 720cm<sup>2</sup> (4xØ150)
- Air exhaust to convection: minimum 720cm<sup>2</sup> (4xØ150)

#### Specifications

- inside finishing: heat-resistant black paint
- vermiculite insulation plates
- convection jacket in galvanized steel
- cast iron stoke grate
- back and sides: ribbed cast iron
- interior finishing: ORIGINAL (ribbed cast iron)

#### Options

- Promat insulation kit
- Finishing frame

#### Table: prescribed insulation thickness (mm)

Combustable finishing material					
	A	B	C	D	E
Test report (TC = 0,14 W/mK)	NC	NC	100	130	40
Metalfire recommended Promasil 1100L (TC = 0,081 W/mK)	NC	NC	60	75	25
Non-combustable finishing material					
non-combustable materials (structural building items EXCLUDED e.g. load bearing walls)	0	0	0	0	0
TC = thermal conductivity NC = non-combustable					

#### First aid and technical support:

- support@metalfire.eu
- +32 (0)9 261 50 57

scale 1:30

www.metalfire.eu

EN 13229

General dimensional tolerances up to 6mm  
Metalfire preserves the right to modify specifications without previous notice

Rev.  
A

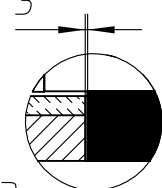
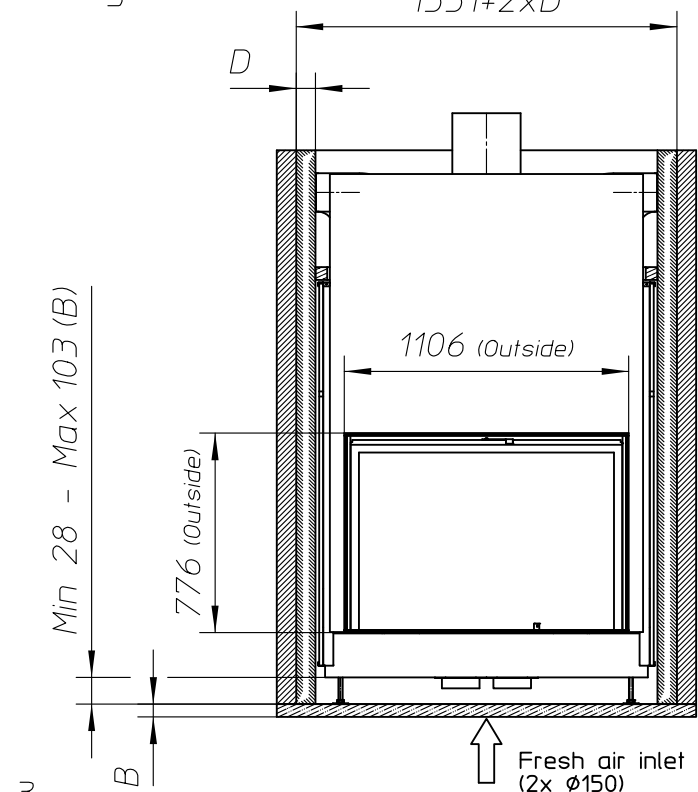
CE

Sheet  
2/5

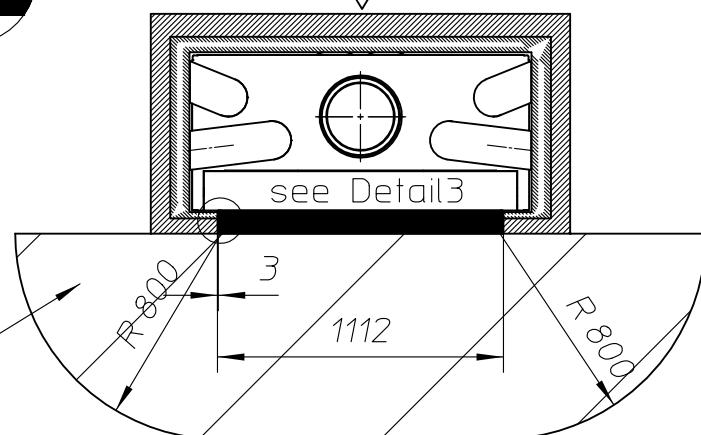
- Combustable finishing material
- Non-combustable finishing material
- Insulation
- Insulation thickness => see table

With finishing frame 90/10

$1331+2 \times D$



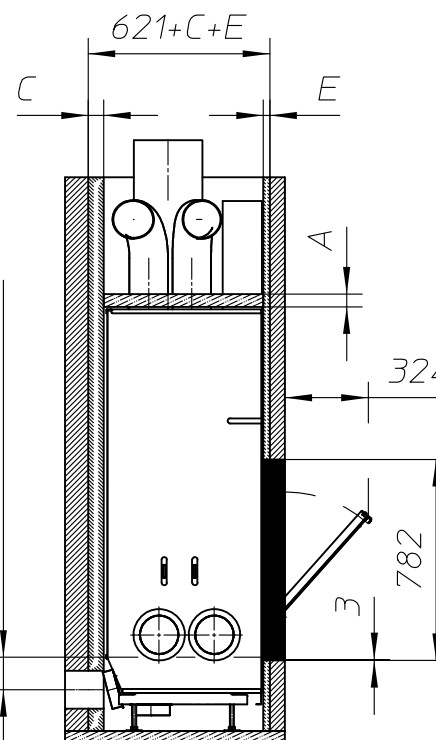
Detail3  
Scale 1:10



Do NOT place any combustible materials in this zone

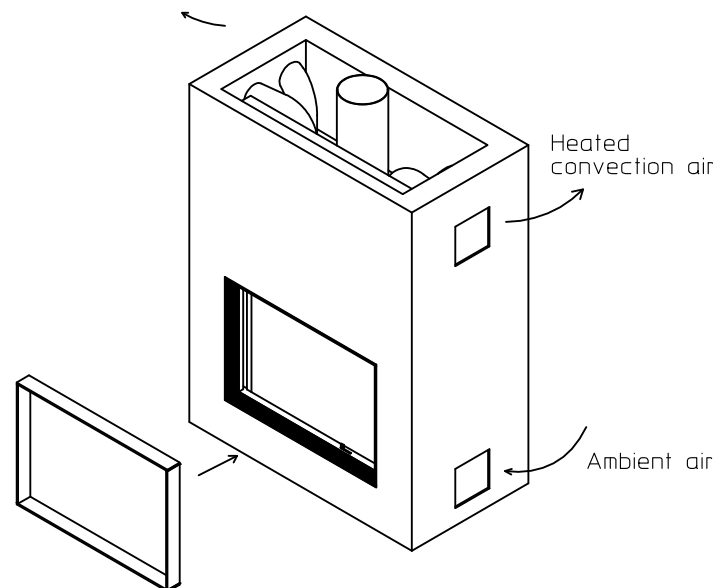
Alternative fresh air inlet  
(2x Ø150)

127 (Air inlet - Comb. opening)



Fresh air inlet  
(2x Ø150)

Heated convection air



ULTIME D Patented

metalfire

Technical Document

Model: ULTIME D MF 1050-75 WHE 1S

#### Dimensions (mm)

- combustion opening WxH: 1086x756
- external WxDxH: 1310x619x2061
- fresh air: 2xØ150
- diameter flue: Ø300

#### Technical Data

- capacity: 27kW
- efficiency capacity: 77.6%
- CO (volume with 13%O<sub>2</sub>): 0.1%
- dust (volume with 13%O<sub>2</sub>): 26mg/m<sup>3</sup>
- weight: 495kg
- Air intake to convection: minimum 720cm<sup>2</sup> (4xØ150)
- Air exhaust to convection: minimum 720cm<sup>2</sup> (4xØ150)

#### Specifications

- inside finishing: heat-resistant black paint
- vermiculite insulation plates
- convection jacket in galvanized steel
- cast iron stoke grate
- back and sides: ribbed cast iron
- interior finishing: ORIGINAL (ribbed cast iron)

#### Options

- Promat insulation kit
- Finishing frame

#### Table: prescribed insulation thickness (mm)

Combustable finishing material					
	A	B	C	D	E
Test report (TC = 0,14 W/mK)	NC	NC	100	130	40
Metalfire recommended Promasit 1100L (TC = 0,081 W/mK)	NC	NC	60	75	25
Non-combustable finishing material					
non-combustable materials (structural building items EXCLUDED e.g. load bearing walls)	0	0	0	0	0
TC = thermal conductivity NC = non-combustable					

#### First aid and technical support:

- support@metalfire.eu
- +32 (0)9 261 50 57

scale 1:25

www.metalfire.eu EN 13229

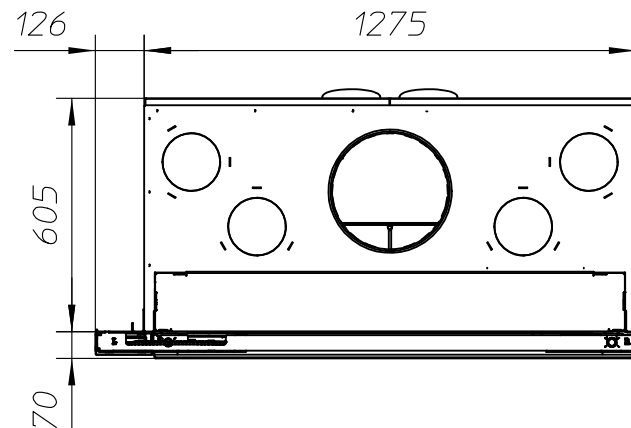
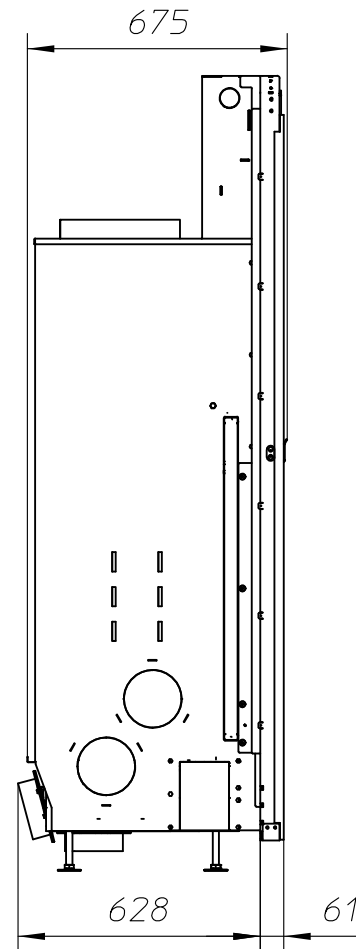
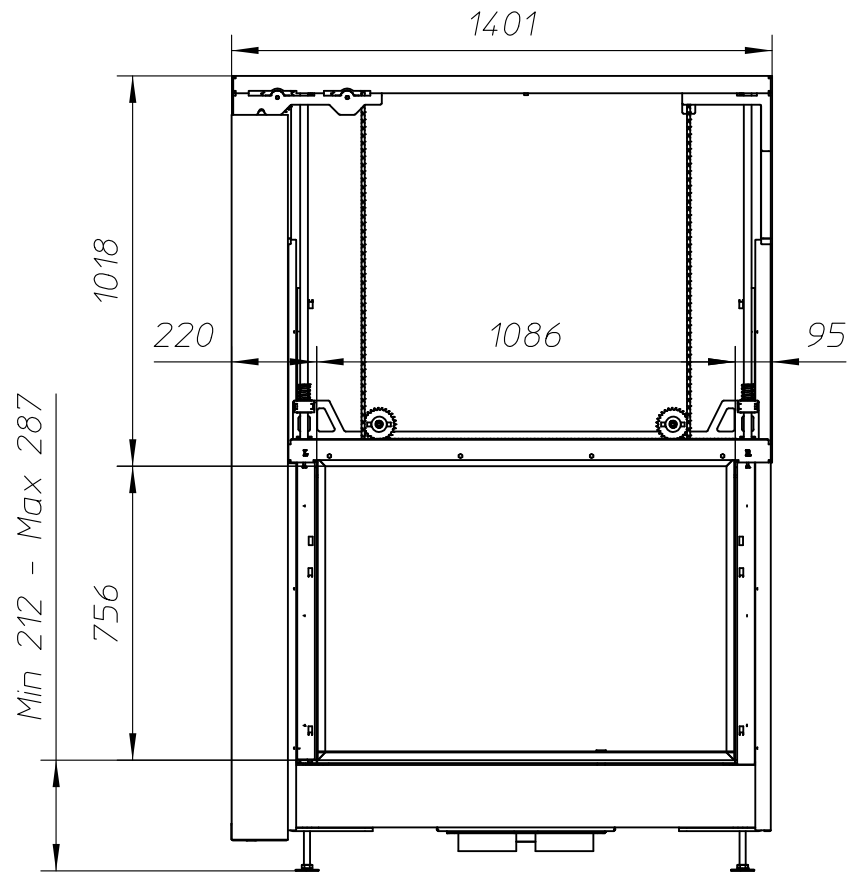
General dimensional tolerances up to 6mm  
Metalfire preserves the right to modify specifications without previous notice

Rev.  
A

Sheet  
3/5

- Combustable finishing material
- Non-combustable finishing material
- Insulation
- Insulation thickness => see table

WITH FIRESCREEN - NO FINISHING FRAME



ULTIME D Patented

metalfire

## Technical Document

Model: ULTIME D MF 1050-75 WHE 1S

### Dimensions (mm)

- combustion opening WxH: 1086x756
- external WxDxH: 1401x689x2061
- fresh air: 2x $\varnothing$ 150
- diameter flue:  $\varnothing$ 300

### Technical Data

- capacity: 27kW
- efficiency capacity: 77.6%
- CO (volume with 13%O<sub>2</sub>): 0.1%
- dust (volume with 13%O<sub>2</sub>): 26mg/N<sup>3</sup>
- weight: 495kg
- Air intake to convection: minimum 720cm<sup>2</sup> (4x $\varnothing$ 150)
- Air exhaust to convection: minimum 720cm<sup>2</sup> (4x $\varnothing$ 150)

### Specifications

- inside finishing: heat-resistant black paint
- vermiculite insulation plates
- convection jacket in galvanized steel
- cast iron stoke grate
- back and sides: ribbed cast iron
- interior finishing: ORIGINAL (ribbed cast iron)

First aid and technical support:

- support@metalfire.eu
- +32 (0)9 261 50 57

scale 1:20

Rev.  
A

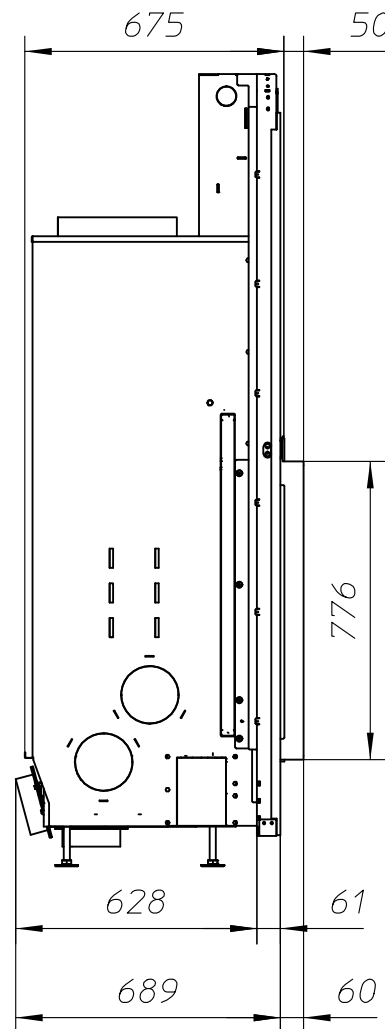
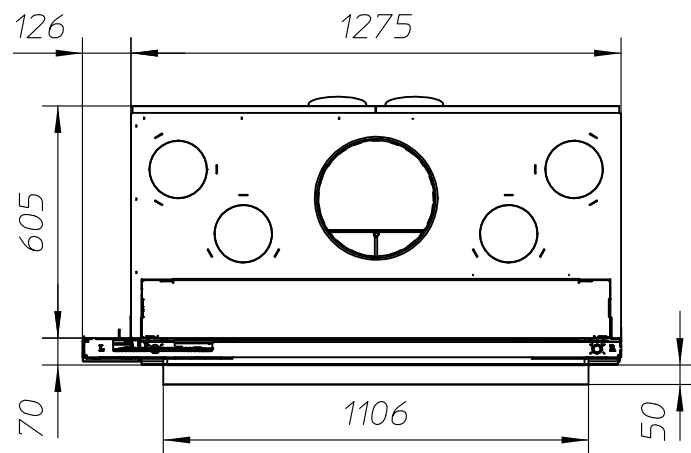
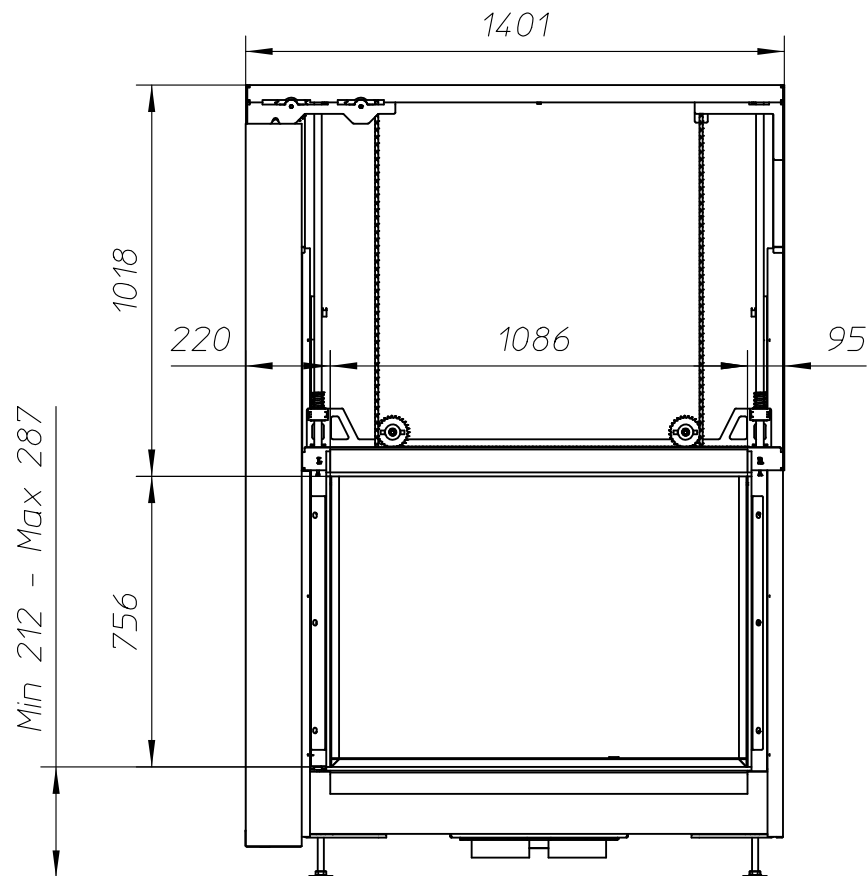
www.metalfire.eu EN 13229

CE

General dimensional tolerances up to 6mm  
Metalfire preserves the right to modify specifications without previous notice

Sheet  
4/5

WITH FIRESCREEN AND FINISHING FRAME 120/10



ULTIME D Patented

metalfire

## Technical Document

Model: ULTIME D MF 1050-75 WHE 1S

### Dimensions (mm)

- combustion opening WxH: 1086x756
- external WxDxH: 1401x749x2061
- fresh air: 2xØ150
- diameter flue: Ø300

### Technical Data

- capacity: 27kW
- efficiency capacity: 77.6%
- CO (volume with 13%O<sub>2</sub>): 0.1%
- dust (volume with 13%O<sub>2</sub>): 26mg/N<sup>3</sup>
- weight: 495kg
- Air intake to convection: minimum 720cm<sup>2</sup>(4xØ150)
- Air exhaust to convection: minimum 720cm<sup>2</sup>(4xØ150)

### Specifications

- inside finishing: heat-resistant black paint
- vermiculite insulation plates
- convection jacket in galvanized steel
- cast iron stove grate
- back and sides: ribbed cast iron
- interior finishing: ORIGINAL (ribbed cast iron)

### First aid and technical support:

- [support@metalfire.eu](mailto:support@metalfire.eu)
- +32 (0)9 261 50 57

scale 1:20

Rev.  
A

[www.metalfire.eu](http://www.metalfire.eu)

EN 13229

CE

General dimensional tolerances up to 6mm  
Metalfire preserves the right to modify specifications without previous notice

Sheet  
5/5